

**Your partner
for industrial supply**

About Us

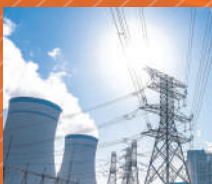
Since the early 2000s and with over 20 years of experience, RMECHS has been delivering high-quality services to customers worldwide in the purchase and sale of industrial machinery, spare parts, and equipment.

Equipped to meet the demands of the modern era, RMECHS offers a wide range of products and solutions across various industrial and manufacturing sectors, with a strong emphasis on customer satisfaction.

RMECHS provides effective and reliable solutions in areas such as international transit trade. With a highly skilled team and dynamic strategies, the company delivers engineering and project-based services swiftly and efficiently—tailored to meet the unique needs of any industry.

Feel free to contact our team for any inquiries or business needs. We are here to provide you with fast, efficient, and top-quality solutions.

Industries



Energy



**Food &
Agriculture**



**Iron &
Steel**



**Rubber &
Tire**



**Filtration,
Dosing**



**Construction
Equipment**



**Paper &
Corrugated**



**Plastic &
Bags**



Marine



**Mechanical
Engineering
& Machining**



**Your partner
for industrial
supply**

Our Offerings

At RMECHS, we are your reliable partner in industrial supply and technical solutions. We specialize in the following key areas:

1. Machinery and Mechanical Components

We provide a wide range of machinery, mechanical parts, equipment, and complete units to meet the demands of various industrial sectors.

2. Hydraulic, Pneumatic & Mechatronic Solutions

Our team offers expert solution partnerships in hydraulics, pneumatics, and mechatronics, delivering integrated systems tailored to your operational needs.

3. Representation & Regional Dealerships

We act as official representatives and regional distributors for reputable international brands, ensuring local access to global technology.

4. Sectoral Consulting & Communication Services

Benefit from our regional expertise through sector-specific consultancy, technical communication, and business mediation services.

5. Rotary Joint, Swivel Joint & Loading Arm Systems

We deliver custom-engineered solutions for fluid and material transfer systems, including rotary joints, swivel joints, and loading arms.

6. Rotary Mechanical Components

We supply high-performance rotary components such as couplings, clutches, camlocks, and other essential drivetrain elements.

**Your partner
for industrial supply**



Phone Number
+90 530 313 50 23



Email Address
info@rmechs.com
sales@rmechs.com



Office Address
RMECHS MAK. DIS. TIC. ITH. IHR. ve CEV. HIZ. LTD. STI.
Kaptan Paşa Mah. Halit Ziya Türkkan Sok. No:12 C43
PK: 34380, Şişli, İSTANBUL – TÜRKİYE